

Innovations - Premises



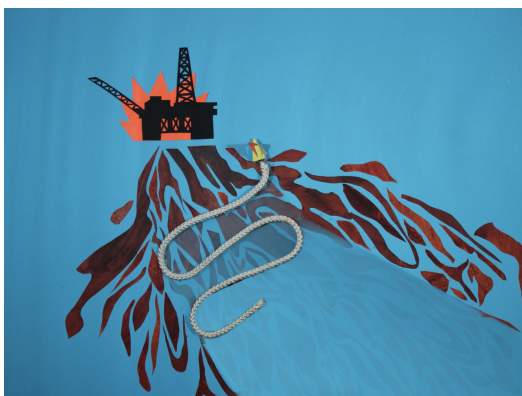
To collect light oil on the surface, repurposed fishing vessels dragged a combination of oil sorbent (white) and oil containment booms (orange). Hundreds of these vessels were deployed by fisherman who exposed their health by manually manipulating the contaminated booms. They would visually spot oil and they would not be able to operate at night, far from shore nor in rough weather conditions.



While this oil was made-man disaster, but the way it behaved depended on natural forces. Oil spilled at sea spreads and drifts downwind under the influence of surface currents. We believe that the most efficient use of an equivalent length sorbent would push it upwind to capture the oil.



A solution would be to drag successive layers of sorbent dragged upwind, capturing oil drifting downwind. But it is very difficult to move such a large unstable structure against the strong wind and surface currents.



The initial concept for Protei was to pull a long oil absorbent boom behind a sail boat that would track upwind, capturing the oil drifting downwind in the successive folds of sorbent.

Using the power of nature to remediate a man-made disaster.